



## Fully Featured IR Thermal Camera

Preventative maintenance solution  
Professional thermographers' choice

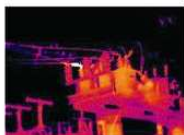
### GUIDIR® IR928

#### Features & Benefits

- Precision non- contact temperature measurement
- Fully onboard image processing
- Compact design, simplified control and easy operation
- Large capacity radiometric image storage
- Professional inspection and reporting software
- License free and rapid delivery



Compact and durable, sophisticated yet simple, GUIDIR®IR928 is the most up-to-date portable infrared thermal camera available today. With high accuracy, intelligent processing, enhanced Firewire interface and live video transmission, this fully featured 320\*240 microbolometer IR camera provides professional thermographers with unprecedented efficiency and convenience at an incredible low cost. Complemented by analysis software, GUIDIR®IR928 acquires extensive capability of analyzing, reporting and archiving both image and voice in a flash.



#### Standard Configuration

- IR928 camera
- 40mm lens
- 4" LCD screen
- 0.25" LCD viewfinder
- CF card & reader
- Infrared image analysis software
- Rechargeable Li-ion battery
- Battery charger
- AC adapter
- Video cable & communication protocol
- User manual
- Carrying case

## Imaging Performance

Detector type:	Uncooled FPA Microbolometer (320× 240 pixels, 45 μ m)
Spectral Range:	8-14 μ m
Field of View:	21°× 15°
Image Frequency:	50Hz PAL/ 60Hz NTSC, non-interlaced
Thermal Sensitivity:	0.08°C at 30°C
Electronic Zoom:	×2, ×4 interpolating

## Image Presentation

External Display:	4" high resolution color LCD (TFT)
Viewfinder	0.25" built-in high resolution color LCD (TFT)
Video Output:	PAL/ NTSC, composite video

## Measurement

Temperature Range:	-20°C - +500°C (up to +1500°C optional)
Accuracy:	± 1°C or ± 1% of reading
Measurement Modes:	Spot / manual (up to 4 moveable), spot / automatic placement at max, area (up to 4 moveable) displaying either max, min, or average, isotherm, line profile, auto alarm
Measurement Features:	Automatic correction based on user input for emissivity, reflected ambient temperature, distance, relative humidity, atmospheric transmission and external optics

## Image Storage

Type:	Removable 256MB Compact Flash Memory card
File Format:	IMG (An individual file consists of infrared image and voice annotation if any)
Voice Annotation:	8 seconds of digital voice clip per file

## Laser Locator

Classification Type:	Class 2 semiconductor laser
----------------------	-----------------------------

## Power System

Battery Type:	Rechargeable Li-ion Camcorder battery, field-replaceable
Battery Operating Time:	Over 3 hours continuous operation

## External Power

Operation:	AC adapter 110/ 220 VAC, 50/ 60Hz
------------	-----------------------------------

## Environmental Specification

Operating Temperature:	-20°C - +60°C
Storage Temperature:	-20°C - +60°C
Humidity:	Operating and storing 10% to 95%, non-condensing
Encapsulation:	IP54 IEC 529 housing
Shock:Operational:	25G, IEC 68-2-29
Vibration: Operational:	2G, IEC 68-2-6

## Interfaces

Remote Control:	RS232 serial communication
Live Video Transmission (Optional):	Up to 750m to a remote monitor

## Physical Characteristics

Weight:	1.5Kg (including battery)
Size:	148mm× 104mm× 108mm (Standard Model)
Tripod Mounting:	1/4" - 20